

USERGATE MAIL SERVER

Mail server solution for small and mid-sized businesses:

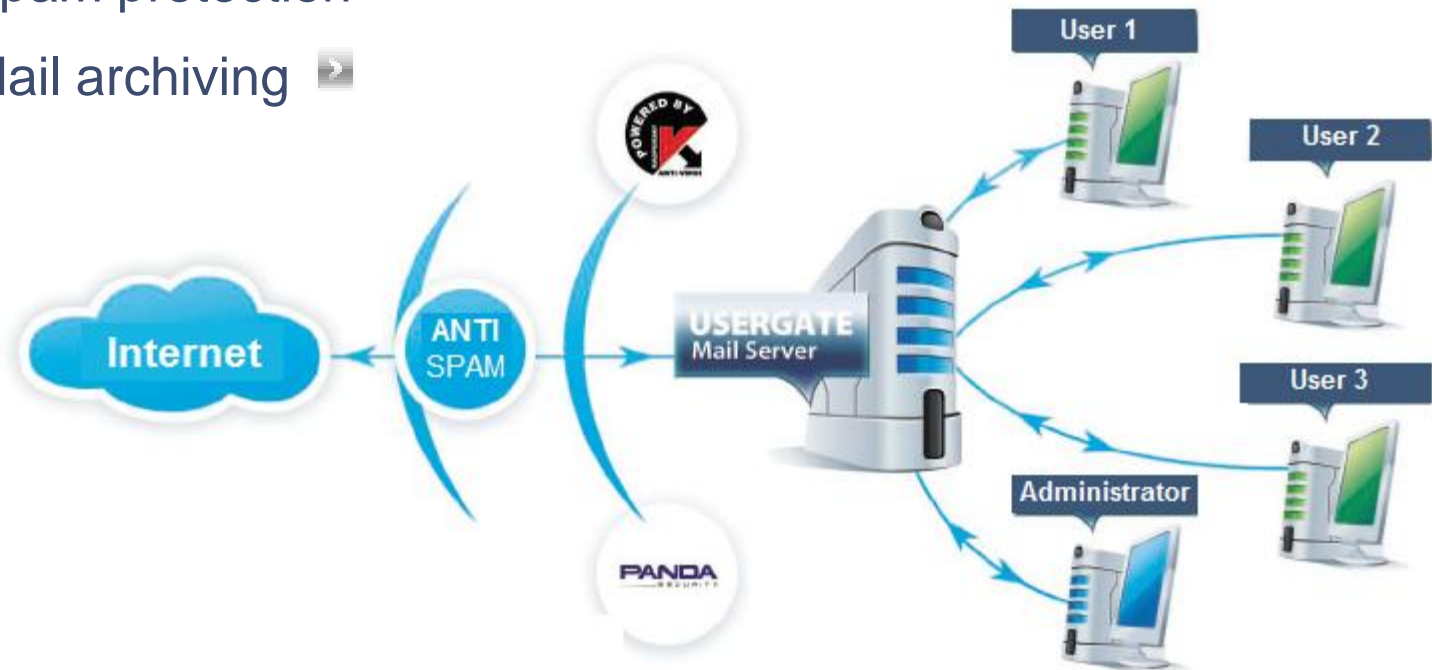
- Easy to configure and control
- Fail-safe
- Total security
- Ultimate spam filtering

UserGate

MAIL SERVER

Process

- E-mail management >
- Security >
- Spam protection >
- Mail archiving >



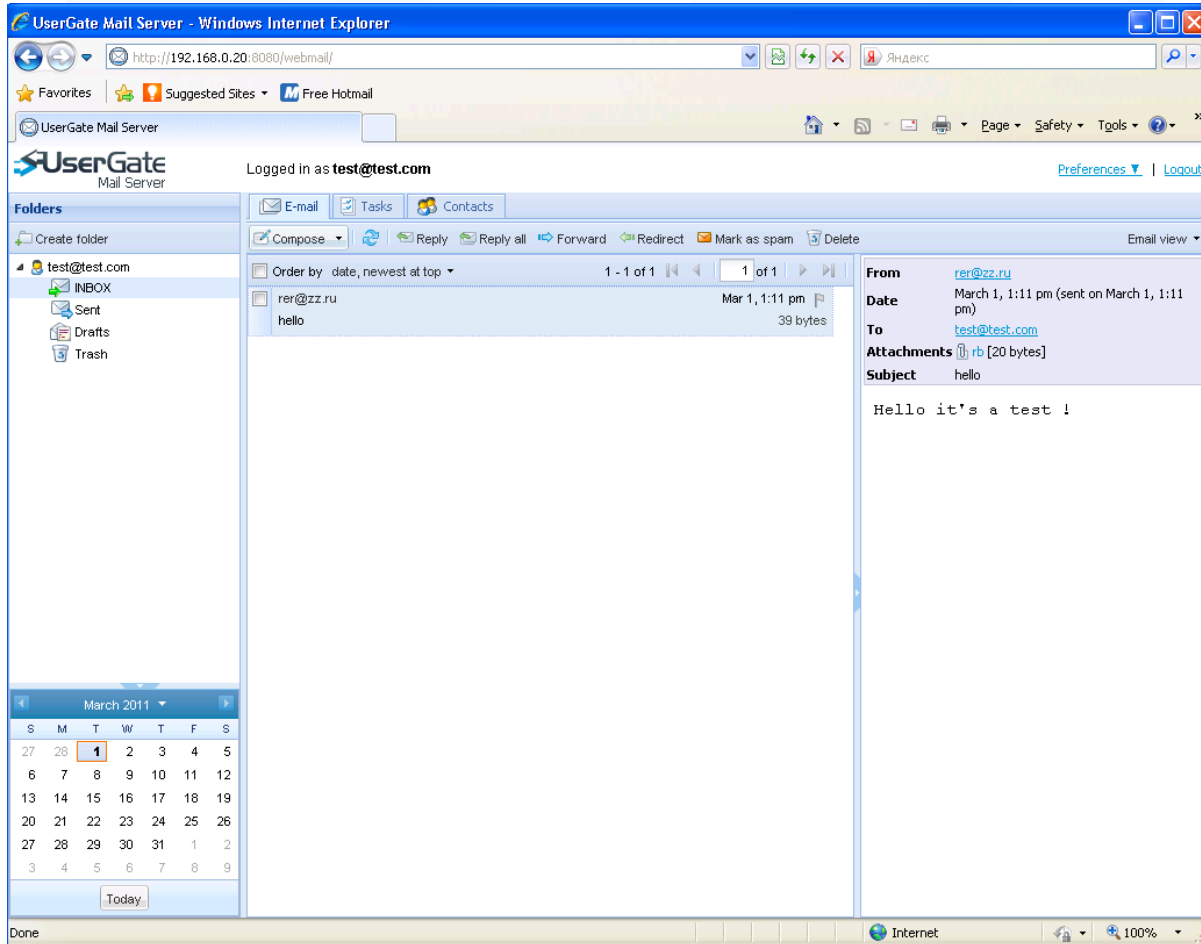
E-MAIL MANAGEMENT

- Domain management. The solution can work with either one or several domains at the same time.
- Rules system. Used to build message processing logic.
- LDAP synchronization. Synchronization with MS ActiveDirectory.
- Remote server administration.
- Web client. Access to mail from any browser application.
- Multiple mail client support.
- Remote accounts support.
- Distribution lists. Private distributions to group members.

UserGate

MAIL SERVER

MAIL ACCESS WEB INTERFACE



SECURITY

The products supports **SSL, POP3s, SMTPs and IMAPs protocols**. Mail server administrator may view available server certificates, import/export certificates and create or remove a certificate in SSL Certificates windows.

Triple virus protection. Three antivirus modules from Kaspersky Lab, Panda Security and **Entensys Zero-Hour**, based on «**cloud**» technology.

Antivirus modules are integrated into the product to scan e-mail traffic for viruses and can be used independently from each other or together for successive message scanning.

ANTISPAM (FREE MODULES)

Messages received by UserGate Mail Server go through several filtering stages. Each message is filtered by connection, source address, destination address and content. UserGate Mail Server supports the following spam filtering technologies:

- DNS-based filtering (DNSBL, RHSBL, Backscatter, MX, SPF, SURBL);
- Statistics-based filtering (Bayesian filtering method designed by Entensys).

Additionally, UserGate Mail Server features SMTP control (verifies validity of commands in accordance with RFC) and may apply restrictions to message size, number of recipients, etc.

CLLOUD-BASED ANTISPAM

Spam detection rate - above 97%

Low false response level – less than one in 1.5 mln messages

The client submits to the cloud-based service a message's UID that helps identify if the message contains spam. The resulting decision is to block a specific message or spam attack instead of an IP address, domain or e-mail address.

Therefore, cloud-based antispam is a convenient solution for businesses where a message deleted by mistake may result in a loss of client or other unwanted consequences.

CLOUD-BASED ANTISPAM



Cloud-based antispam module at Mail Server uses such technologies as Recurrent Pattern Detection (RPD™) and GlobalView™ designed by Commtouch, the world's leader in spam analysis. A network of data centers (spam bots) analyzes over 2 billion messages daily, monitoring mail traffic in any part of the world.

Recurrent Pattern Detection technology and GlobalView reputation service help the Mail Server analyze the information in real time and classify IP addresses. Consequently, spam attacks can be blocked immediately as they begin.



CLOUD-BASED ANTIVIRUS

Proactive virus detection

Does not require installation of bulky software

Present-day viruses, worms and trojans use various weak points of antivirus technologies. The major issue is the time required to create signatures or carry out heuristics analysis. Entensys Zero-Hour™ enables the earliest detection of new epidemics.

Entensys continuously monitors Internet and identifies massive epidemics as soon as they break out. Using hundreds of servers (honeypots) all over the world, the solution can detect both spam and viruses. Unlike many other antivirus solutions, Entensys Zero-Hour™ is not based just on virus signatures.

MONITORING AND STATISTICS

UserGate Mail Server generates reports on all messages processed by the mail server solutions. Using the message monitoring capability, you can filter messages by date, processing status (delivered/blocked), source address and destination address, push-send messages blocked as spam and create exception lists.

MODULAR STRUCTURE

UserGate Mail Server has a modular structure. This enhances the solution's fail-safety, while each module restarts on failure automatically, and failure of one specific module does not affect the system in general. Additionally, UserGate Mail Server may run on a distributed system.



IMAP INTEGRATION

UserGate Mail Server supports IMAP integration **MS Exchange** or **Lotus Domino** servers. IMAP integration feature allows the product to create a shared IMAP folder on a remote mail.

MAIL ARCHIVING

UserGate Mail Server stores archives of all received, sent and forwarded mail. This feature may become very important when you need to recover deleted mail or prove compliance with the requirements of regulatory authorities.

ENTENSYS

- Date of foundation: 2006 year
- Offices: Moscow, Novosibirsk, Leipzig (Germany)

STRATEGIC PARTNERS



Kaspersky Lab
Russia



Panda
Security
Spain



BrightCloud
USA



Commtouch
Israel